



How-To Guide

Configure UK Regional Settings

Publication Date

March 25, 2024

Abstract

This guide provides instructions to configure the UK Time and Regional Settings in Netsurion Open XDR.

Note:

The screen/ figure references are only for illustration purpose and may not match the installed product UI.

Scope

The configuration details in this guide are consistent with Netsurion Open XDR 9.x.

Audience

This guide is for the users of the Netsurion Open XDR Web console.

Table of Contents

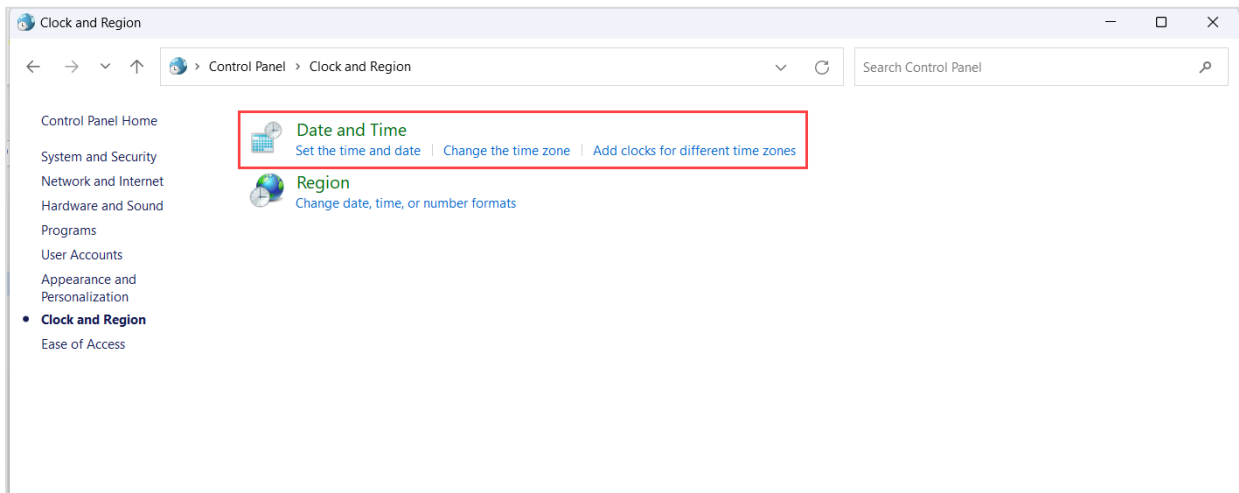
1	Overview	4
2	Change Date and Time Settings	4
3	Configure Language Settings	5
3.1	Language	5
3.2	Region	6
3.3	Change Language Settings in the SQL Server	10
3.4	Validate the Settings	13

1 Overview

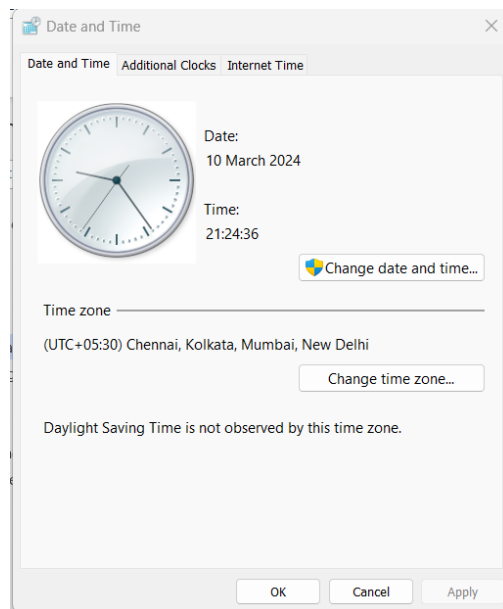
This document provides a detailed description of configuring UK Time, Language and Region settings in the system and SQL server.

2 Change Date and Time Settings

1. Click the **Start** button, select **Control Panel**, and then select **Clock, Language, and Region > Date and Time**.



2. Select **Set the Time and Date**. The Date and Time window will be displayed as shown below.

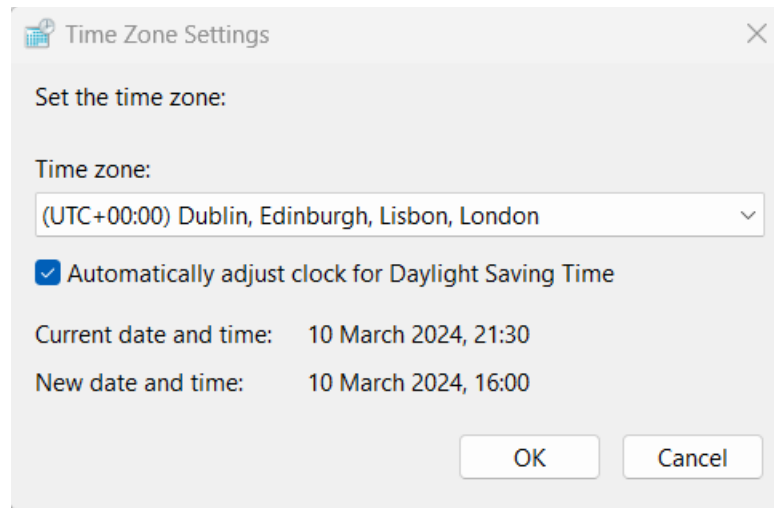


3. Select the **Change Time Zone** button. The Time Zone Window will be displayed as shown below.

Note

If the user is in a **non-US** zone, for example, (**Brussels, Copenhagen, Madrid, Paris**) or (**Canberra, Melbourne Sydney**), then follow [Configure regional & Language settings](#) to change it to UK settings.

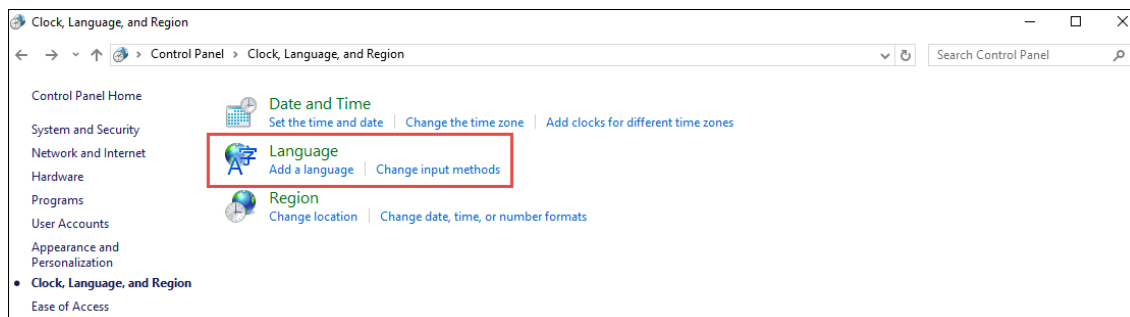
4. Select the UK Time Zone from the dropdown list and then click **OK**.



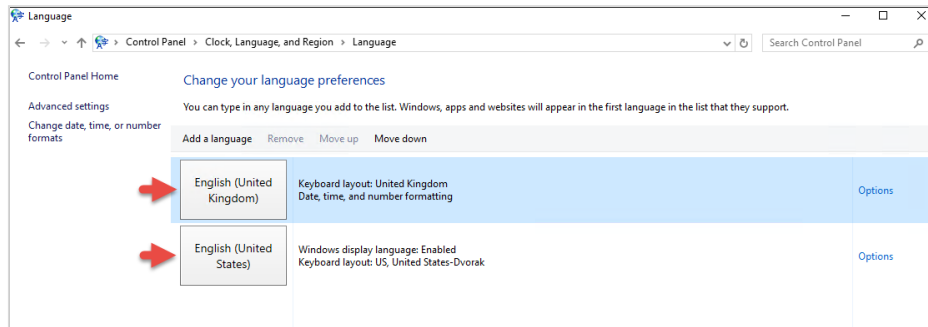
3 Configure Language Settings

3.1 Language

1. To change the language, under **Clock, Language, and Region**, select **Language**.

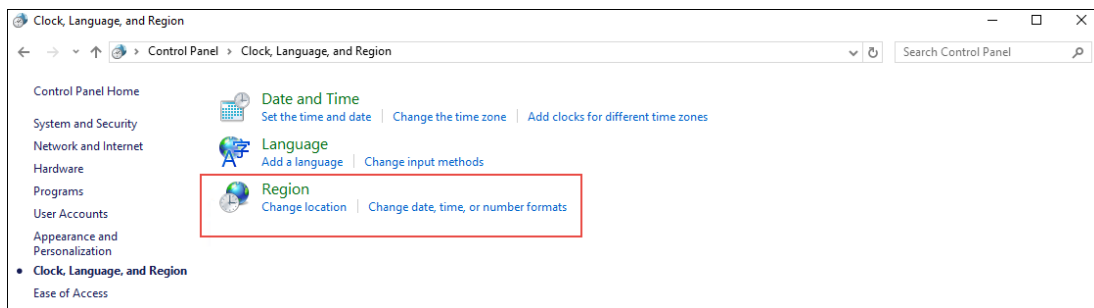


2. In the language window, keep the settings as shown below:

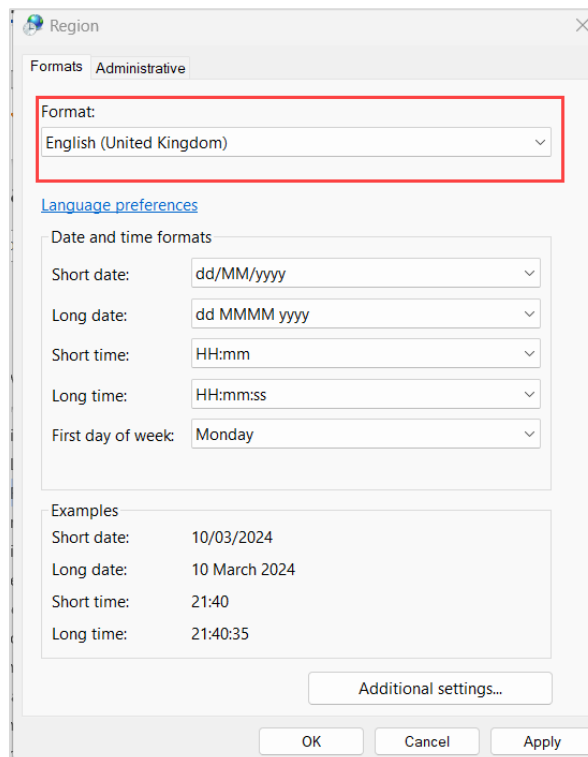


3.2 Region

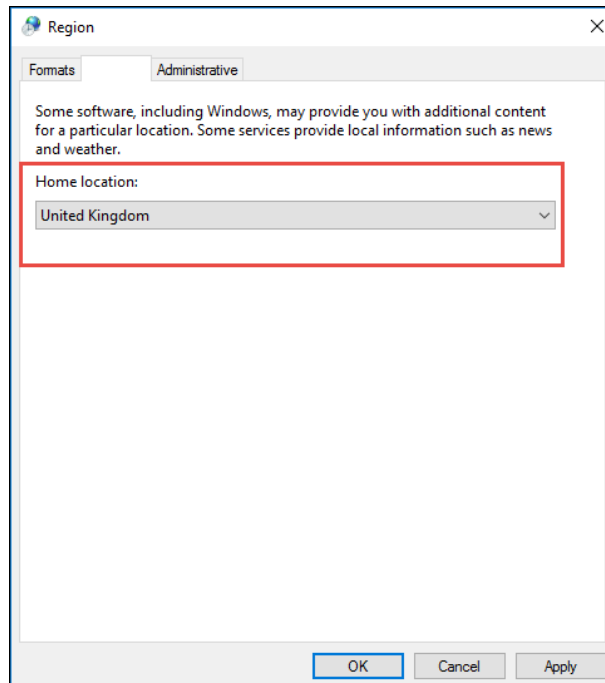
1. To change the region, under **Clock, Language, and Region**, select **Region**.



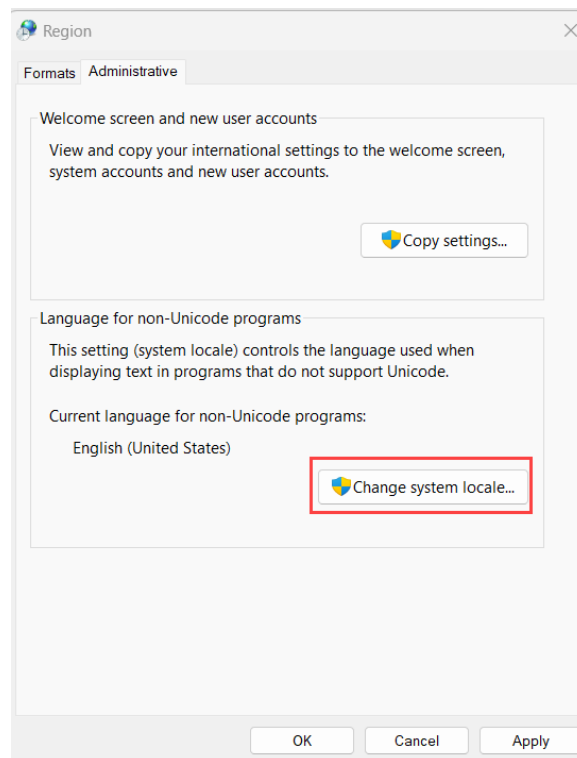
2. In the Region window, select Format as English (United Kingdom) from the dropdown list.



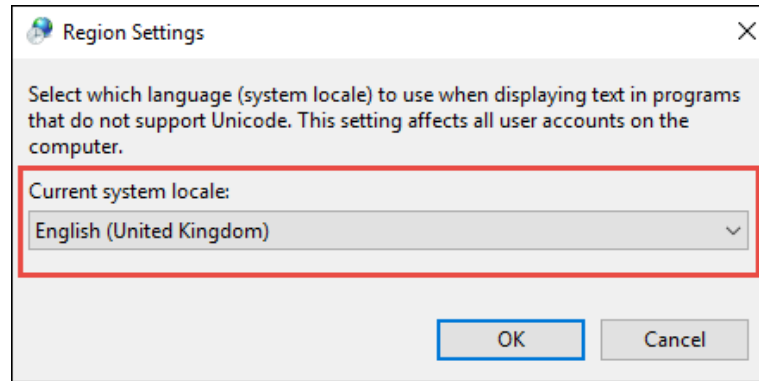
3. Select the **Location** tab. In the **Home location** dropdown, select the **United Kingdom**.



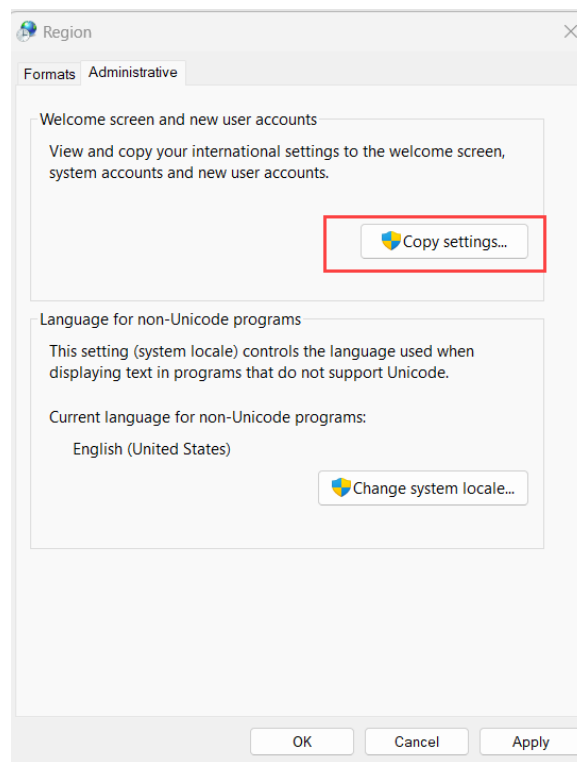
4. Select the **Administrative** tab and then select the **Change System Locale** button.



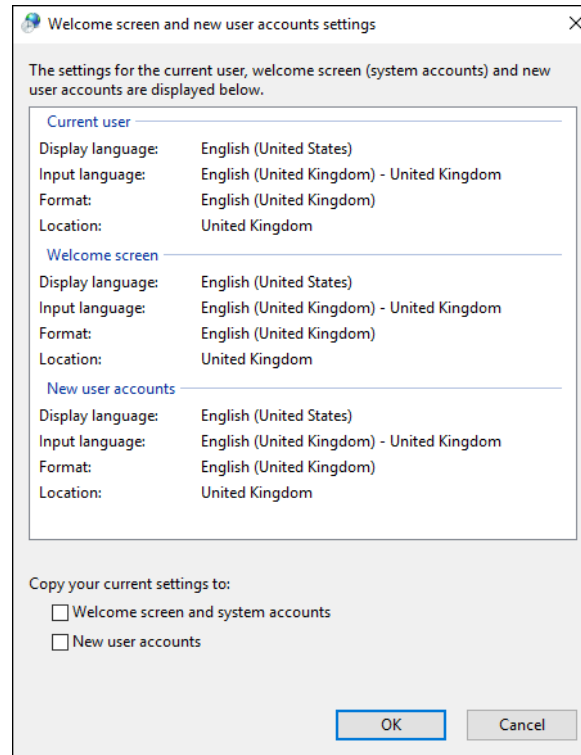
5. In the appearing Regional Settings window, select the **Current System Locale** as English (United Kingdom).



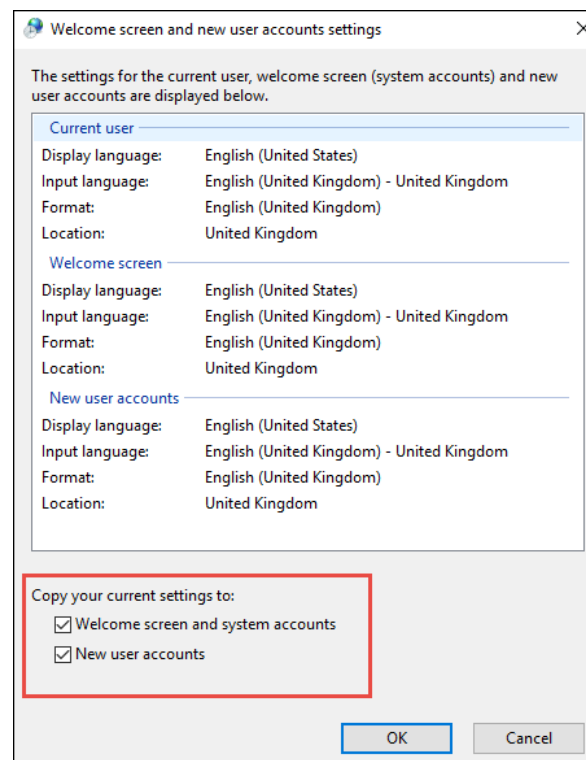
- Again, under the administrative tab, select **Copy Settings**.



- The Welcome screen and new user account settings window will be displayed as shown below.



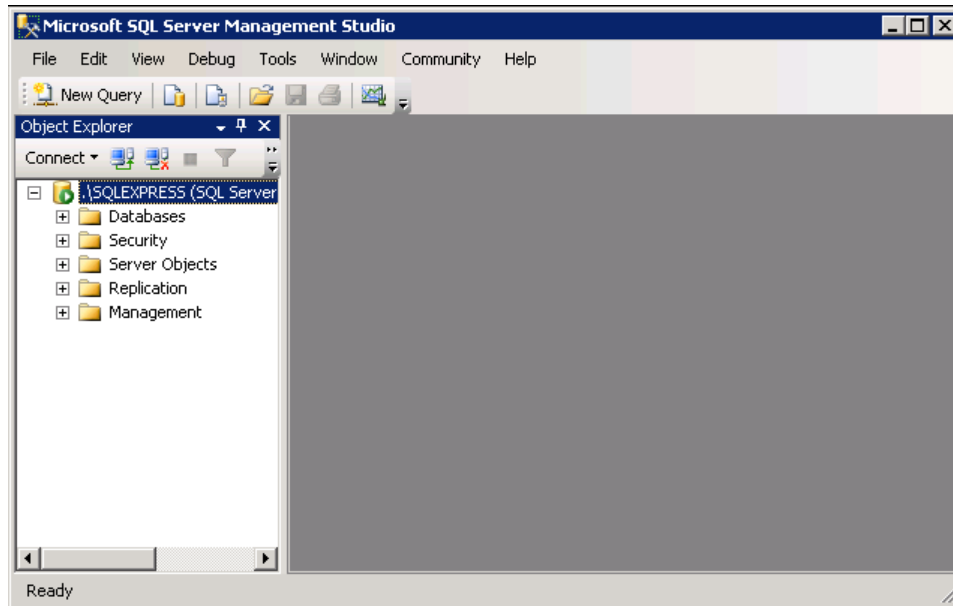
8. Select the **Welcome screen and system accounts** and **New user accounts** checkboxes, and then click **OK**.



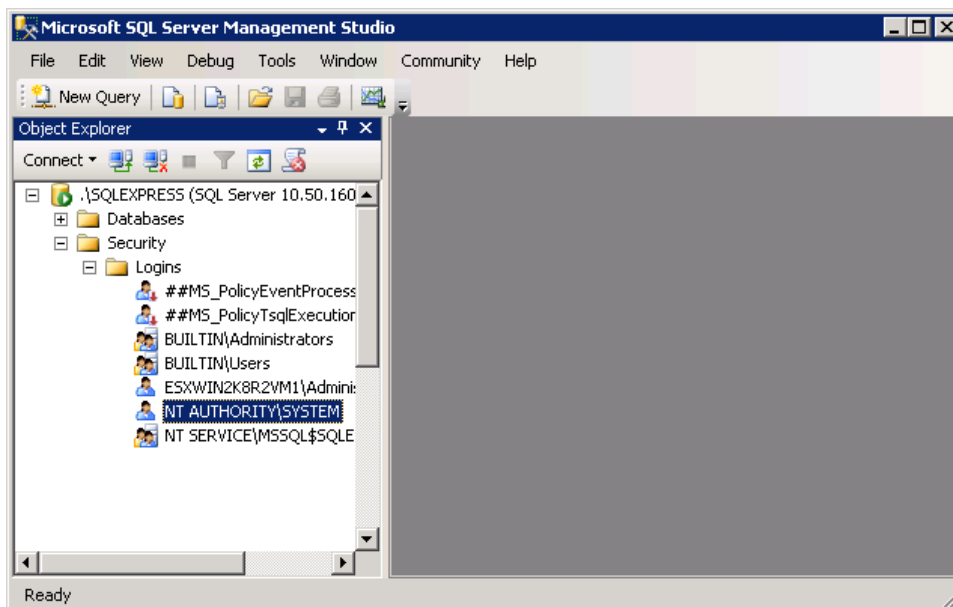
3.3 Change Language Settings in the SQL Server

To update the Language Settings in the SQL Server, perform the following steps:

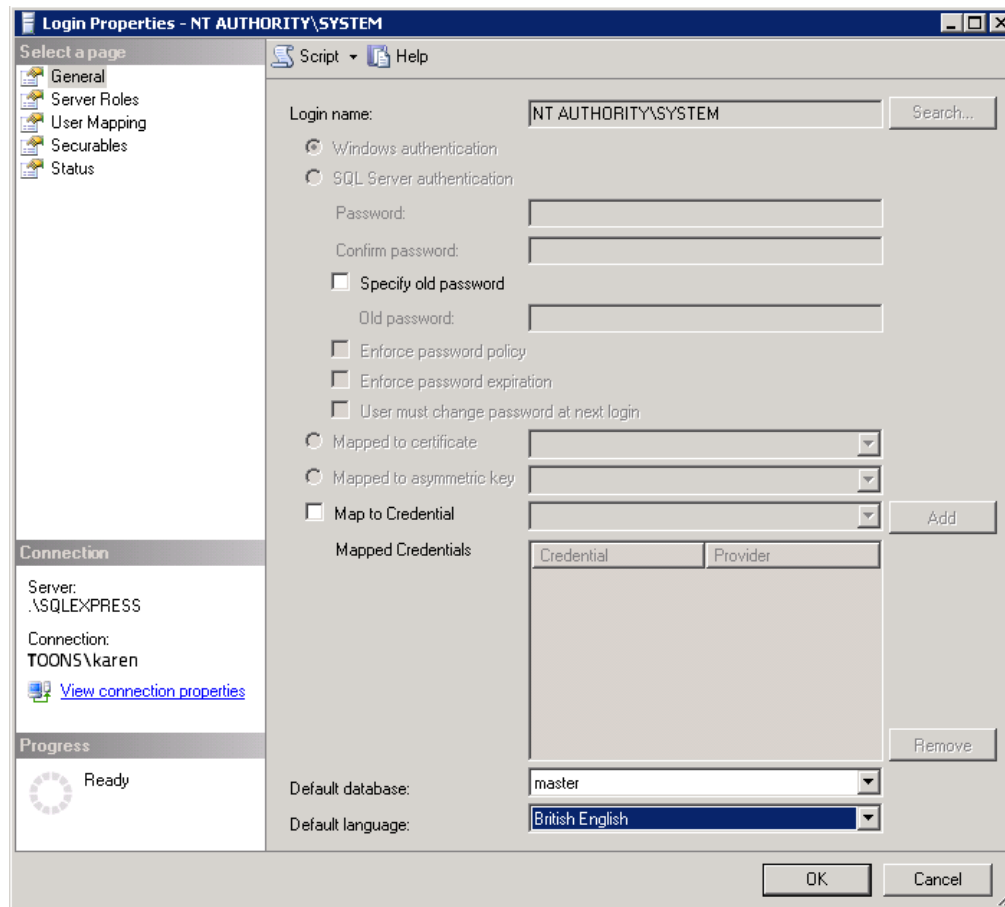
1. To log into SQL Server, select the **Start** button, select **All Programs**, and then select **Microsoft SQL Server**.
2. Select **Microsoft SQL Server Management Studio**. The Connect to Server window will be displayed as shown below:



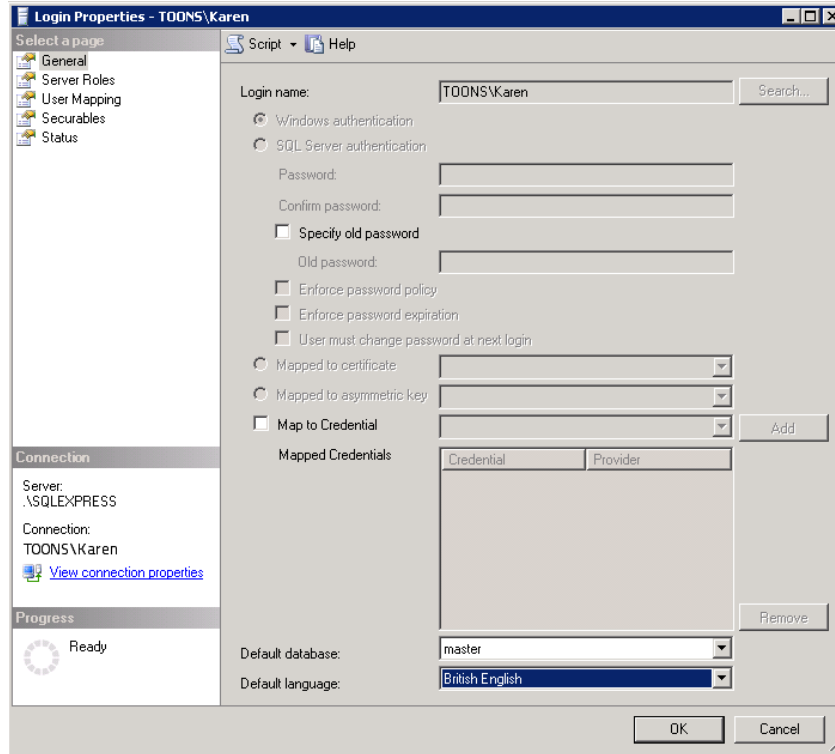
3. In the **\SQLEXPRESS** node, select **Security > Logins** node. The language setting changes must be made for the respective user and NT Authority.



- Right-click **NT AUTHORITY\SYSTEM**, and then select **Properties**. The Login Properties dialog box will be displayed as shown in the below figure.



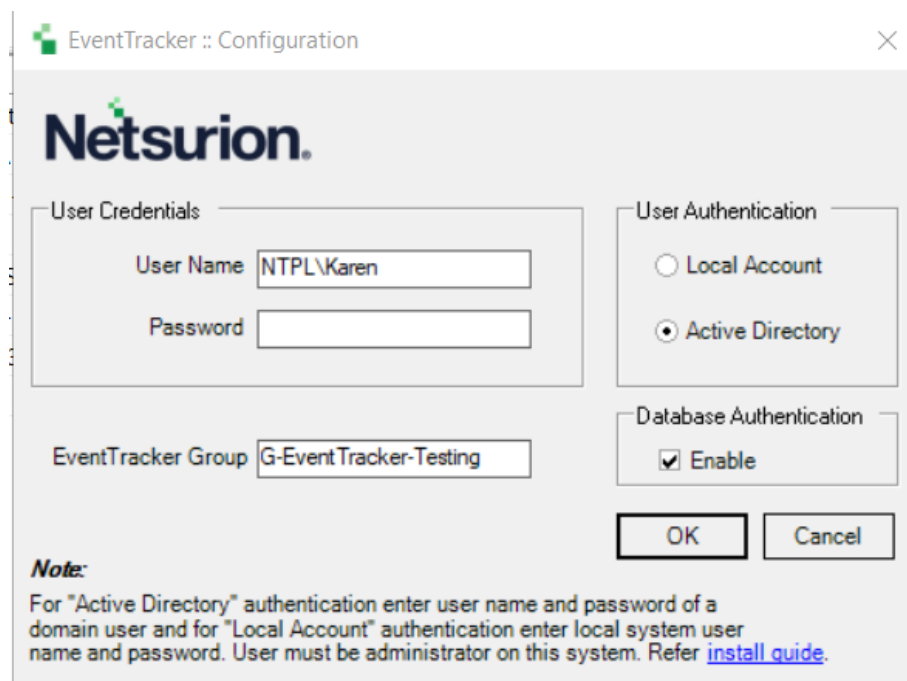
- In the **Default Language** dropdown, select **British English**. Similarly, the changes must be made for the respective user (In our example given below TOONS\Karen) who has installed Netsurion Open XDR.
- In the **Logins** node, right-click the user (i.e. TOONS\karen) and then select **Properties**.
- In the **Default language** dropdown, select **British English**, and then click the **OK** button.



8. Restart the machine so that all changes take effect.

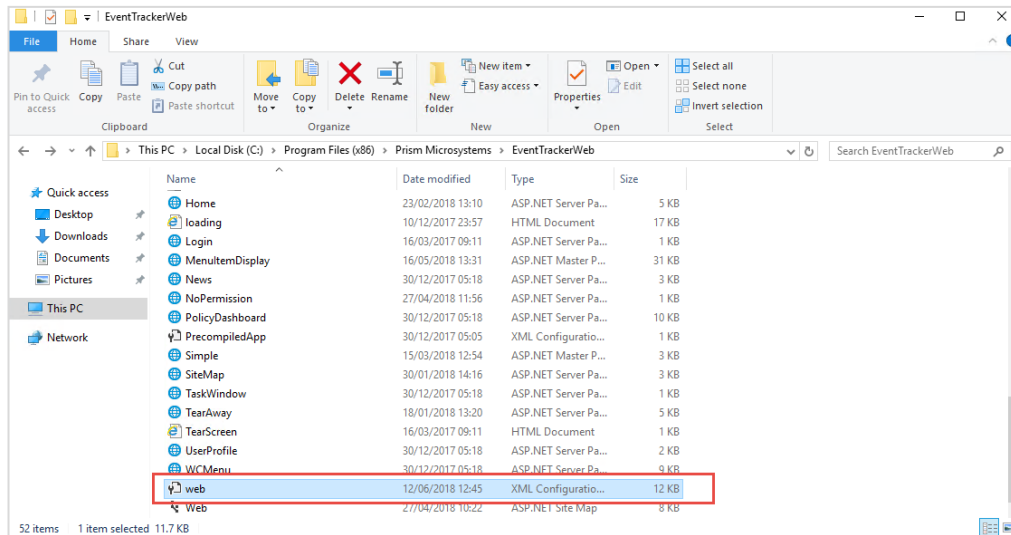
Note

After restarting the machine, run the Netsurion Open XDR configuration.



3.4 Validate the Settings

1. To verify the settings, navigate to `Install Directory\Prism Microsystems\EventTracker Web\Web`.



2. Open the file in Notepad and search for the keyword `"en-"`.
3. Check whether `"en-GB"`, is applied successfully. If not, please check the above settings again. A figure is shown below:



About Netsurion

Netsurion® delivers an adaptive managed security solution that integrates our Open XDR platform with your existing security investments and technology stack, easily scaling to fit your business needs. Netsurion's 24x7 SOC operates as your trusted cybersecurity partner, working closely with your IT team to strengthen your cybersecurity posture. Our solution delivers managed threat protection so you can confidently focus on your core business.

Headquartered in Ft. Lauderdale, FL with a global team of security analysts and engineers, Netsurion is a leader in Managed Detection & Response (MXDR). Learn more at www.netsurion.com.

Contact Us

Corporate Headquarters

Netsurion
Trade Centre South
100 W. Cypress Creek Rd
Suite 530
Fort Lauderdale, FL 33309

Contact Numbers

Use the [form](#) to submit your technical support tickets. Or reach us directly at 1 (877) 333-1433

Managed XDR Enterprise Customers	SOC@Netsurion.com
Managed XDR Enterprise MSPs	SOC-MSP@Netsurion.com
Managed XDR Essentials	Essentials@Netsurion.com
Software-Only Customers	Software-Support@Netsurion.com

<https://www.netsurion.com/support>